

KLINKMANN

KLINKMANN TRAININGS

2017



Wonderware
Finland & Baltics

Pro-face
HMI Human Machine Interface

**Rockwell
Automation**

CARLO GAVAZZI

UNITRONICS



Klinkmann Technical Center offers certified training courses from different manufacturers

Contents

Certified training courses

• Wonderware InTouch basic course (1 day)	3
• Wonderware InTouch automation software course (3 days)	4
• Wonderware Historian and Historian Client (3 days).....	5
• Wonderware System Platform (4 days)	6
• Rockwell Automation Studio 5000 Logix Designer introduction course (1 day)	7
• Rockwell Automation Studio 5000 Logix Designer Project Development course (3 days)	8
• Unitronics Vision series PLCs and communication (1 day)	9
• Unitronics Jazz series PLCs (1 day)	10
• Unitronics UniStream series PLCs and communication (1 day)	11

All Klinkmann organized training courses are held in Riga, Ganību dambis 2a.

All training courses also can be held on customer's request and also on-site trainings at customer site can be arranged

More information: tel: +371 6738 1615, +371 6738 1617, email: training@klinkmann.lv

On Klinkmann web:



WONDERWARE INTOUCH BASICS COURSE (1 DAY)

This course is designed to provide understanding of the basic principles of the Wonderware visualization module. The purpose of this course is to give you the basic knowledge necessary to develop a HMI system for your specific application using basic InTouch elements.

Course participants receive a certificate.

Training price: €100 (VAT 0%)

Training place: Klinkmann Lat, Ganību dambis 2a, Rīga; on request also available at customer site

More information: +371 6738 1615, +371 6738 1617

e-mail: training@klinkmann.lv

Training dates: 22.08.2017, 24.11.2017, also on request

Languages: English and Russian

Training price includes coffee breaks, lunch and training materials.

Agenda

09.00 - 09.30	Morning coffee, Klinkmann and Wonderware presentation
09.30 - 10.00	Presentation of InTouch
10.00 - 10.45	Creation of new projects using InTouch Application Manager and WindowMaker
12.00 - 12.45	Lunch
14.00 - 15.00	Logic and I/O connections
14.00 - 15.00	Scripts
15.00 - 16.00	Alarms and historization



WONDERWARE INTOUCH AUTOMATION SOFTWARE COURSE (3 DAYS)

The InTouch 2014 R2 course is focused on Modern InTouch Application design. The course provides a fundamental understanding of the principles of Wonderware visualization module and the steps necessary to develop a HMI system for your specific application.

Course participants receive a certificate.

Training price: €600 (VAT 0%)

Training place: Klinkmann Lat, Ganību dambis 2a, Rīga

More information: +371 6738 1615, +371 6738 1617

e-mail: training@klinkmann.lv

Training dates: 17.-19.10.2017, 6.-8.12.2017, also on request

Languages: English and Russian

Training price includes coffee breaks, lunch and training materials.

Agenda

1st day

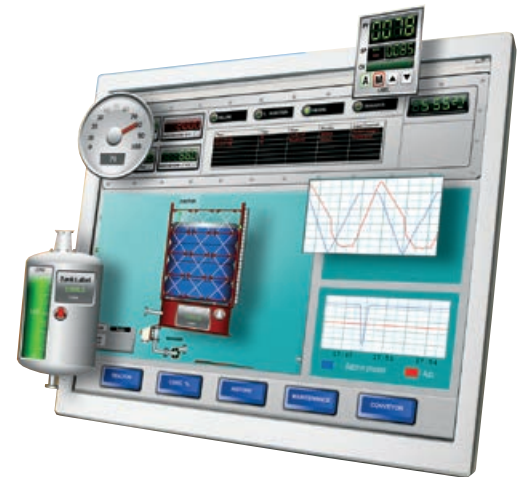
9.00 – 10.30	InTouch Software Overview
10.30 – 12.00	Window Design and Navigation using WindowMaker
12.00 – 12.45	Lunch
12.45 – 15.00	InTouch Tagname Dictionary
15.00 – 17.00	I/O Configuration

2nd day

9.00 – 10.30	Situational Awareness Visualization
10.30 – 12.00	Window Construction Using Symbol Editor
12.00 – 12.45	Lunch
12.45 – 15.00	Custom Symbol Construction Using Custom Properties and Animations
15.00 – 17.00	InTouch Alarms

3rd day

9.00 – 10.30	Data Logging and Trending
10.30 – 12.00	InTouch enhancement with QuickScript
12.00 – 12.45	Lunch
12.45 – 15.00	Security management
15.00 – 17.00	Application Maintenance and Distribution



WONDERWARE HISTORIAN AND HISTORIAN CLIENT (3 DAYS)

This course is designed to provide a fundamental understanding of the features and functionality of Historian Server for System Platform applications and Historian Client tools.

Course participants receive a certificate.

Training price: €600 (VAT 0%)

Training place: Klinkmann Lat, Ganību dambis 2a, Rīga

More information: +371 6738 1615, +371 6738 1617

e-mail: training@klinkmann.lv

Training dates: 7.-9.11.2017, also on request

Languages: English and Russian

Training price includes coffee breaks, lunch and training materials.

Agenda

1st day

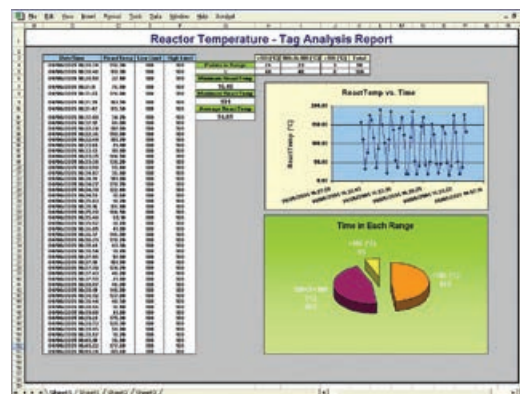
9.00 – 10.30	Introduction to Wonderware Historian
10.30 – 12.00	Historian and InTouch
12.00 – 12.45	Lunch
12.45 – 15.00	Historian and System Platform
15.00 – 17.00	Data Retrieval (Queries)

2nd day

9.00 – 10.30	Data Summaries
10.30 – 12.00	Data Replication
12.00 – 12.45	Lunch
12.45 – 15.00	Manual data
15.00 – 17.00	Historian Event System

3rd day

9.00 – 10.30	Introduction to Wonderware Historian Client, Historian Client Trend
10.30 – 12.00	Wonderware Historian Client Workbook
12.00 – 12.45	Lunch
12.45 – 15.00	Wonderware Historian Client Query
15.00 – 17.00	Wonderware Historian Client Report and ActiveX Controls



WONDERWARE SYSTEM PLATFORM (5 DAYS)

The course introduces the Wonderware System Platform software, as well as InTouch for System Platform, offering to acquire practical skills in their use.

Course participants receive a certificate.

Training price: €1000 (VAT 0%)

Training place: Klinkmann Lat, Ganību dambis 2a, Rīga

More information: +371 6738 1615, +371 6738 1617

e-mail: training@klinkmann.lv

Training dates: 11.-15.09.2017, 13.-17.11.2017, also on request

Languages: English and Russian

Training price includes coffee breaks, lunch and training materials.

Agenda

1st day

9.00 – 12.00 Introduction. Application Infrastructure

12.00 – 13.00 Lunch

13.00 – 17.00 Application Objects

2nd day

9.00 – 12.00 Extending the Objects

12.00 – 13.00 Lunch

13.00 – 17.00 Alarms and History

3rd day

9.00 – 12.00 Security. Galaxy Maintenance.

12.00 – 13.00 Lunch

13.00 – 17.00 Integration Products. Multi-Node Applications

4th day

9.00 – 12.00 InTouch development environment. ArcestrA Symbols

12.00 – 13.00 Lunch

13.00 – 17.00 ArcestrA Symbols

5th day

9.00 – 12.00 Alarm Visualization

12.00 – 13.00 Lunch

13.00 – 17.00 History Visualization. Security. Runtime Language Switching



ROCKWELL AUTOMATION STUDIO 5000 LOGIX DESIGNER INTRODUCTION COURSE (1 DAY)

The course introduces the Studio 5000 Logix Designer software and provides basic practical skills how to use Logix Designer to reduce engineering time and cost.

Course participants receive a certificate.

Training price: €100 (VAT 0%), price includes one Micro810 controller

Training place: Klinkmann Lat, Ganību dambis 2a, Rīga; on request also available at customer site

More information: +371 6738 1615, +371 6738 1617

e-mail: training@klinkmann.lv

Training dates: 28.09.2017, 25.10.2017, also on request

Languages: English and Russian

Training price includes coffee breaks, lunch and training materials.

Agenda

09.00 - 11.00	Presentation of Logix5000 controllers, Logix Designer software and RA Integrated Architecture basics
11.00 - 12.00	Creating new project, configuring I/O, connecting computer to controller, loading project to controller
12.00 - 12.45	Lunch
12.45 - 14.00	Testing your Logix program, adding logic and tags online, creating and running a trend
14.00 - 15.00	Creating and using user-defined data type, adding Point I/O, using Logix Designer Help
15.00 - 16.00	Questions and Answers



ROCKWELL AUTOMATION STUDIO 5000 LOGIX DESIGNER PROJECT DEVELOPMENT COURSE (3 DAYS)

The course introduces the Studio 5000 Logix Designer software and offers to acquire practical skills for programming the Allen-Bradley CompactLogix and ControlLogix controllers.

Course participants receive a certificate.

Training price: €600 (VAT 0%)

Training place: Klinkmann Lat, Ganību dambis 2a, Rīga

More information: +371 6738 1615, +371 6738 1617

e-mail: training@klinkmann.lv

Training dates: 10.-12.10.2017, 12.-14.12.2017, on request

Languages: English and Russian

Training price includes coffee breaks, lunch and training materials.

Agenda

1st day

9.00 – 12.00	Course Overview. Communicating with Controllers Creating a new RSLogix 5000 Project
12.00 – 12.45	Lunch
12.45 – 17.00	Creating a Periodic Task Organizing Data Entering, Editing, and Verifying Ladder Logic

2nd day

9.15 – 12.00	Communicating with a Local I/O Module Configuring a Controller to Produce and Consume Data
12.00 – 12.45	Lunch
12.45 – 17.00	Communicating with a Remote I/O Module Creating an Event Task

3rd day

9.00 – 12.00	Retrieving and Setting Controller Status Values with GSV/SSV Instructions Configuring a Message Documenting and Searching for Project Components
12.00 – 12.45	Lunch
12.45 – 17.00	Managing RSLogix 5000 Project Files Allocating Connections Integrated Practice - Developing an RSLogix 5000 Project



UNITRONICS VISION SERIES PLCs AND COMMUNICATION (1 DAY)

The training course introduces the Unitronics Vision series PLCs and offers to acquire practical skills for programming the Unitronics Vision PLCs by using the VisiLogic programming software.

[Course participants receive a certificate.](#)

Training price: Free of charge training, 145 € (without VAT) training + SM43, 285 € (without VAT) training + V700

Training place: Klinkmann Lat, Ganību dambis 2a, Rīga

More information: +371 6738 1615, +371 6738 1617

e-mail: training@klinkmann.lv

Training dates: 03.10.2017, 06.10.2017(Vilnius, in English), 28.11.2017, 01.12.2017(Vilnius, in English), also on request

Languages: English and Russian

Training price includes coffee breaks, lunch and training materials.

Agenda

9.00 – 09.30	Morning coffee and presentation
09.30 – 12.00	Unitronics products family Unitronics PLC programming software VisiLogic Programming, practical examples and project download to the PLC
12.00 – 13.00	Lunch
13.00 – 16.00	Continuation – Programming examples and tasks Configuring Unitronics displays on computer, practical examples Communications: GSM/GPRS modems (Gemalto BGS2T), Ethernet and internet
16.00 – 17.00	Remote programming and remote configuration via wireless network



UNITRONICS JAZZ SERIES PLCS (1 DAY)

Unitronics Jazz Series Micro PLC with text-based HMI introductory course, providing the basic knowledge about Jazz PLCs and their programming. The training course offers to acquire basic practical skills for programming the Unitronics Jazz PLCs by using the U90 Ladder programming software

Course participants receive a certificate.

Training price: 100 € (VAT 0%), price includes one JZ20R16 controller.

Training place: Klinkmann Lat, Ganību dambis 2a, Rīga

More information: +371 6738 1615, +371 6738 1617

e-mail: training@klinkmann.lv

Training dates: on request

Languages: English and Russian

Training price includes coffee breaks, lunch and training materials.

Agenda

9.00 – 09.30	Morning coffee and presentation
09.30 – 12.00	Unitronics products family Basics of Unitronics U90 Ladder programming software Programming, practical examples and project download to the PLC
12.00 – 13.00	Lunch
13.00 – 16.00	Continuation – Programming examples and tasks Configuring Unitronics displays on computer, practical examples Communications: GSM/GPRS modems (Gemalto BGS2T),
16.00 – 17.00	Remote programming and remote configuration via wireless network



UNITRONICS UNISTREAM SERIES PLCS AND COMMUNICATION (1 DAY)

The training course introduces the Unitronics UniStream series PLCs and offers to acquire practical skills for programming the Unitronics UniStream PLCs by using the UniLogic programming software.

[Course participants receive a certificate.](#)

Training price: 100 € (VAT 0%),

Training place: Klinkmann Lat, Ganību dambis 2a, Rīga

More information: +371 6738 1615, +371 6738 1617

e-mail: training@klinkmann.lv

Training dates: on request

Languages: English and Russian

Training price includes coffee breaks, lunch and training materials.

Agenda

9.00 – 09.30	Morning coffee and presentation.
09.30 – 12.00	Unitronics products family. Unitronics UniStream PLC programming software UniLogic. Programming, practical examples and project download to the PLC.
12.00 – 13.00	Lunch
13.00 – 16.00	Continuation - Programming examples and tasks. Configuring Unitronics displays on computer, practical examples. Communications: GSM/GPRS modems (Gemalto BGS2T), Ethernet and internet.
16.00 – 17.00	Web Server, Data Tables and Formulas.



2017

Klinkmann_training_2017_en_lt_0517

KLINKMANN

www.klinkmann.lt

UAB "Klinkmann Lit"
Kauno g. 34, LT-03202 Vilnius
Tel. +370 5215 1646
post@klinkmann.lt